

NOVOMUR®

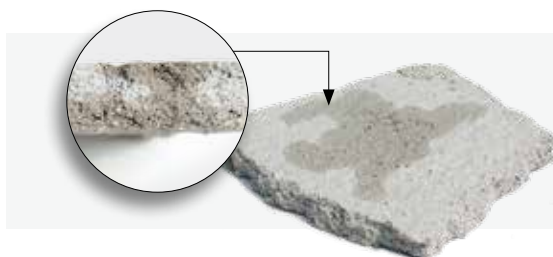
Dehumidifying Thermo Acoustic Plaster



FOR:

INTERNAL - EXTERNAL USE

V. 1.0 Rev. 13_02_2025



General Description

NOVOMUR is a dehumidifying base plaster that also provides thermal acoustic insulation. **NOVOMUR** is suitable for both internal and external applications.

NOVOMUR can be used to improve the thermal resistance of masonry, and therefore provide thermal insulation, by applying at least a 2 cm layer. **NOVOMUR** is comparable to a wool coat due to its excellent breathability and low thermal conductivity values (see technical data).

Note: In presence of rising dampness, remove existing plaster only up to the height effected by the dampness, there is no need to remove the plaster beyond this level.

NOVOMUR is made with high-quality natural thermal aggregates, first-grade cork granules, and cement-based binder.

Before proceeding with the mixture, if you are using a 20 KG bag: add two 0.14 litre bottles of additive (**ADDITIVO AFON CASA**) to the water in the mixer; if you are using 10 KG bags add one 0.14 litre bottles of additive (**ADDITIVO AFON CASA**) for each bag. (see preparation procedures).

NOVOMUR is directly applied to the surface of the masonry. Once completely dried, it must be finished exclusively with **AFON CALCE** finishing coat.

Warranty

In addition to the legal warranty, the product is covered by a Product Liability Insurance Policy with a primary Italian insurance company.

Supply Formats:

20 Kg bag + two 0.14 lt bottles of ADDITIVE (**ADDITIVO AFON CASA**).

10 Kg bag + one 0.14 lt bottle of ADDITIVE (**ADDITIVO AFON CASA**).

Application Instructions

NOVOMUR is used as a base plaster for old and new masonry, ceilings, etc. Its properties ensure excellent performance and long-lasting durability even in the presence of moisture.

NOTE; IN CASE OF RISING DAMPNESS, REMOVE EXISTING PLASTER UP TO THE HIGHEST POINT EFFECTED BY THE DAMPNESS.

PROFESSIONAL USE ONLY

Surface Preparation

Pay particular attention to the surfaces that need to be treated, especially existing stone masonry. Complete removal of the old plaster is recommended in the affected areas, followed by cleaning and washing of the surfaces to eliminate any residual dust. For masonry with depressions or cavities larger than 3 cm, it is advisable to fill and level the surface using hydrated lime or a lime-based binder mixed with coarse sand (avoid using NHL 3.5 hydraulic lime). In the case of hygroscopic substrates that tend to absorb a lot of moisture, apply a preliminary, highly fluid scratch coat, of the open type, made with sand and cement.

Lavorazione

NOVOMUR can be applied on any type of masonry in a single coat up to approximately 2 cm in thickness. For greater thicknesses, the plaster must be applied in multiple coats, and additional layers can be added after 24 hours. The procedure is as follows:

1. Set up guides using the same material, metal bars or wooden strips, secure them with quick-setting cement and remove them the following day.
2. Apply the product manually using a trowel, placing large amounts side by side, and cutting off excess material to ensure uniform application. Avoid pressing the plaster to avoid breaking the air cells within the mix.
3. Avoid applying the mortar over a large surface all at once. It is preferable to work in sections of about 70–80 cm at a time. During the initial setting/curing stage the roughcast should not be thickened because the air cells that have formed are not able to support a new layer of mortar if the previous one has not hardened. Avoid using a float to smooth the surface.
4. Level the surface with a metal straightedge, moving it slowly in a zigzag motion from the bottom upward. If, after leveling, some areas are still below the desired thickness, proceed carefully when adding more mortar (otherwise, the entire layer could detach). You can then use a wooden straightedge to roughen the surface, preparing it to receive the **AFON CALCE** finishing coat (see technical data sheet).
5. For medium thicknesses of 2–3cm, apply the finishing coat after 48 hours. For thicker layers of 4–7cm, wait 5–6 days. Avoid applying **NOVOMUR** at low temperatures.
6. The thermal finishing layer must then be painted with **PITTURA CALCARICA AFON CASA** (lime paint) for interior use or with **PITTURA AI SILICATI DI POTASSIO AFON CASA** (Potassium silicate paint) for exterior use.

Warnings and Mixing Instructions

- It cannot be applied by spraying;
- Do not apply at temperatures below 5°C;
- If **NOVOMUR** is applied in spaces without adequate ventilation, a mechanical ventilation system must be installed;
- Pay particular attention to the mixing procedure. We recommend proceeding as follows:

In a 150-liter mixer, depending on the bag supply:

For 20 kg bags: Pour 11 liters of water + two 0,14 lt. bottles of **AFON CASA Additive (ADDITIVO AFON CASA)** into the mixer, start the mixer, and then add one 20 kg package of **NOVOMUR**.

For 10 kg bags: Pour 17 liters* of water + three 0.14 lt. bottles of **AFON CASA Additive (ADDITIVO AFON CASA)** into the mixer, start the mixer, and then add three 10 kg packages of **NOVOMUR**.

In a 70-liter mixer:

For 10 kg bags or 20 kg bags: Pour 5.5 liters of water + one 0.14 lt. bottle of **AFON CASA Additive (ADDITIVO AFON CASA)** into the mixer, start the mixer, and then add 10 kg of **NOVOMUR**.

- Allow the mixer to run for 5–7 minutes. **WARNING:** Once the mixture is ready, switch off the mixer.

NOTE: To avoid compromising the mixture, we recommend mixing the contents of all three bags at once (or just one bag in the case of the 20 kg supply), and placing an empty bag over the mixer opening to limit dust escape. It is mandatory for the operator to wear a protective mask.



Watch the video
on youtube



*The indicated liters are those required to mix three 10 kg packages of Novomur. If you wish to mix different quantities, adjust the amount of water accordingly.

Storage

Store in dry conditions for no longer than 12 months.

Technical Data

THERMAL CONDUCTIVITY	$\lambda = 0,052 \text{ W/mK}$
VAPOR DIFFUSION RESISTANCE	$\mu=5$
SPECIFIC WEIGHT	150 Kg/m ²
SPECIFIC HEAT	1000 J/KgK
APPROXIMATE COVERAGE	5 kg/m ² (thickness 1 cm)
PACKAGING	10 kg or 20 kg Bag
FIRE REACTION	A1
VAPOR TRANSMISSION RATE	370 g/day/m ² (thickness 2.5 cm)
SOUND REDUCTION	13 dB (thickness 3 cm)
FLEXURAL STRENGTH	1.66 N/mm ²
COMPRESSIVE STRENGTH	3.24 N/mm ²
WATER ABSORPTION COEFFICIENT BY CAPILLARITY	0.19 Kg/m ² min. ^{0.5}
DIRECT TENSILE ADHESION	0.517 N/mm ²

Specification Clause

FOR INDOOR AND OUTDOOR USE TO DEHUMIDIFY, INCREASE THERMAL INSULATION, OR IMPROVE ACOUSTIC PERFORMANCE OF WALLS..

Execution of **NOVOMUR** base plaster, with thermal conductivity of 0.052 W/mK, sound-absorbing properties, and dehumidifying capabilities, after complete removal of existing plaster down to the bare masonry and thorough washing.

Apply exclusively by hand using a trowel, after mixing according to instructions and following the application procedures provided by **AFON CASA**. Plaster the entire surface to be treated until reaching a minimum thickness of 2 cm is achieved. For greater thicknesses, apply each additional layer after 24 hours without using plaster-reinforcing mesh

The data provided refers to laboratory tests; in practical on-site applications, these may be significantly altered depending on installation conditions. The user must verify the product's suitability for the intended use and assumes full responsibility for any consequences arising from its application. Always refer to the updated technical data sheet downloadable from www.afoncasa.it